

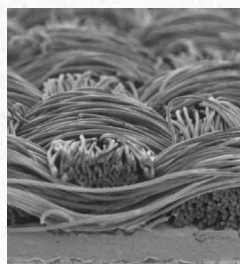
WHEN THE GOING GETS TOUGH YOU NEED REINFORCEMENTS

CORDURA®
F A B R I C

CORDURA® FABRICS ARE WIDELY USED TO PROVIDE REINFORCEMENT TO THOSE PARTS OF GARMENTS MOST LIKELY TO BE SUBJECTED TO AGGRESSIVE LOCALISED ABRASION.

CORDURA® CLASSIC FABRIC

CORDURA® Classic fabrics are mainly available in four principle fabric weights, all produced using 100% CORDURA® brand qualifying nylon 6.6 yarn that is air jet textured to offer enhanced abrasion resistance and a particular aesthetic appearance. Fabrics are primarily based on plain weaves although other woven constructions such as rip stops are readily available.



Photos above are Scanning Electron Microscope (SEM) >300X magnification showing front and side views of a typical 1000d air textured nylon CORDURA® Classic fabric.

STRETCH FUNCTIONALITY

CORDURA® Classic fabric is available in 2-way stretch versions using INVISTA's LYCRA® T400® yarn to provide greater comfort in garments such as across the seat of a trouser and the shoulders of a jacket. CORDURA® Classic fabrics using more conventional LYCRA® fibre stretch technology are already used in markets such as motorcycle apparel.

CORDURA® Classic Fabric Range For Reinforcement

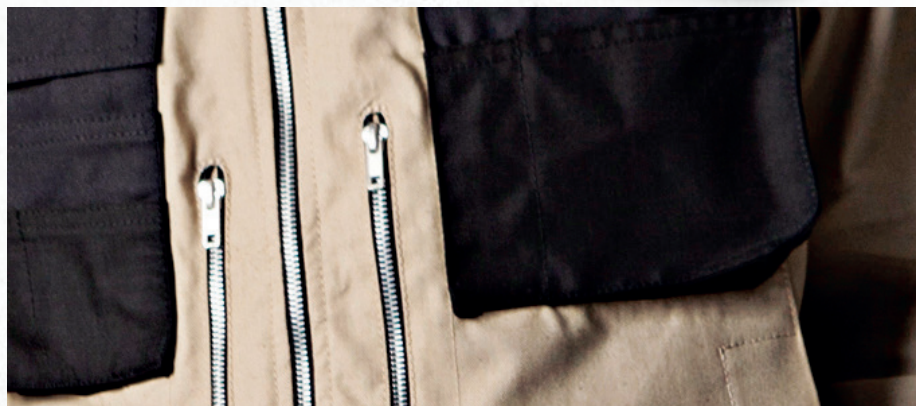
	Uncoated Weight*
1000d CORDURA® Classic fabric	280 g/m ²
700d CORDURA® Classic fabric	255 g/m ²
500d CORDURA® Classic fabric	230 g/m ²
330d CORDURA® Classic fabric	200 g/m ²

*fabrics available both coated and uncoated

MEETS EN471 CONTRAST 2003 IN A RANGE OF COLOURS

Garments washed in the industrial laundry environment can be reinforced with CORDURA® Classic fabrics that meet EN471 Contrast 2003. As a result, wearer protection can be enhanced and industrial laundry performance can be optimised.

CORDURA® Classic fabrics can also be used as reinforcements in garments made for specific manufacturing, construction and public utility sectors where industrial laundry requirements often need to be met.



Garments featuring CORDURA® fabric reinforcements are worn by tradespeople such as electricians, builders, carpenters and plumbers. Most commonly reinforced areas: knees, trouser hems and seats, shoulders, pockets and elbows.

CORDURA® CLASSIC FABRIC USING SOLUTION-DYED NYLON

Solution-Dyed CORDURA® Classic fabrics are manufactured using INVISTA's pre-coloured speciality nylon 6.6 yarns. These fabrics offer innovative alternatives to standard CORDURA® Classic workwear reinforcement fabrics.

KEY ADVANTAGES:

- Matt lustre - reduced shine and reflectance
- Excellent batch-to-batch shade matching
- Superb high temperature industrial laundry wash fastness
- Enhanced resistance to sunlight UV fade and strength loss
- Dyeing process uses less water and energy compared to piece dyed fabric

Innovative fabric designs can be developed using solution-dyed fabric technology such as:

2-tone CORDURA® Classic fabrics

CORDURA® fabrics containing "reflective" yarns

CORDURA® LITE FABRIC

CORDURA® Lite fabrics have high strength-to-weight ratios and are made from flat yarns which can result in fabrics having a slight sheen. Being based on the high tenacity nylon 6.6 yarns, (80-84 cN/tex) used for the construction of air bags, these fabrics offer excellent tear and tensile strength. The nylon used in these fabrics is stronger than steel.

The key offering in the CORDURA® Lite fabric collection for reinforcement is a 420 denier dobby fabric at 260 g/m². The latest development is a 315 denier dobby version at 220 g/m². Other fabric constructions are also available.



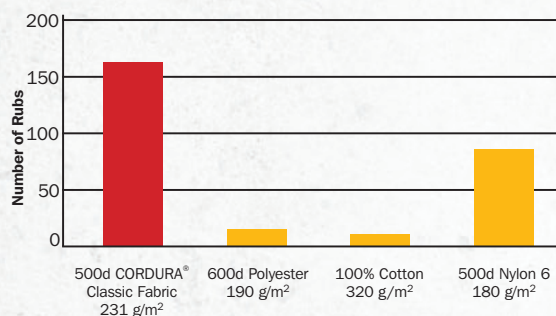
EXCEPTIONAL ABRASION RESISTANCE

The INVISTA nylon 6.6 fibre used in CORDURA® fabrics has a melting point of 254 °C (commodity nylon 6 has a melt temperature of 219 °C). This high melting point is believed to provide CORDURA® fabric with the ability to withstand high levels of friction generated heat whilst maintaining fabric integrity.

Whilst the melt temperature of polyester is similar to that of nylon 6.6 fibre, it requires significantly less frictional energy to arrive at the melt point.

MARTINDALE ABRASION*

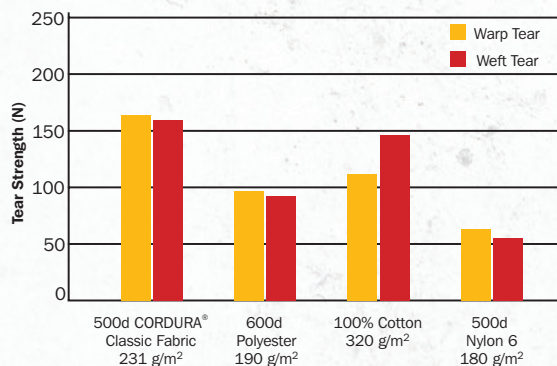
(P180 Grit paper, 9kPa) ISO 12947-2



HIGH TENSILE & TEAR STRENGTH

Cotton is an intrinsically weak fibre when compared to nylon 6.6. Testing shows that fabrics based on nylon 6.6 fibre have higher levels of tensile and tear strength compared to fabrics made from other core fibres used in fabrics for workwear.

TEAR STRENGTH* ISO 13937-2



* Based on independent lab tests and INVISTA lab tests
June 2009 – 2010

For more details about the comprehensive range of CORDURA® brand workwear fabrics and authorized fabric producers, please visit www.CORDURA.com

EUROPEAN REGION

INVISTA Textiles (UK) Ltd
Ermin Street, Brockworth, Gloucester GL3 4HP UK

Contact: Tim Anson

Tel: +44 (0)1452 633789

Email: CORDURA.eu@INVISTA.com